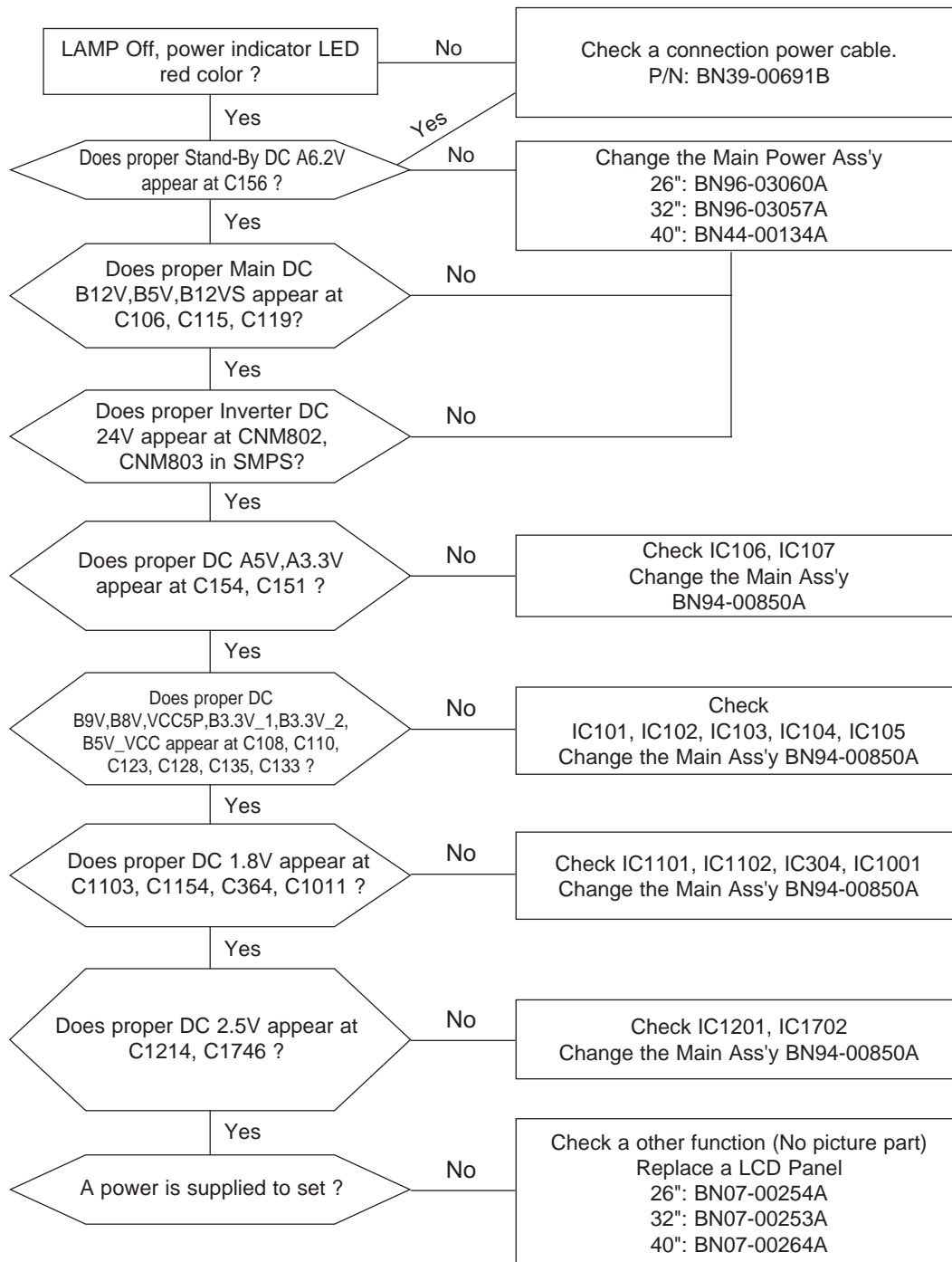
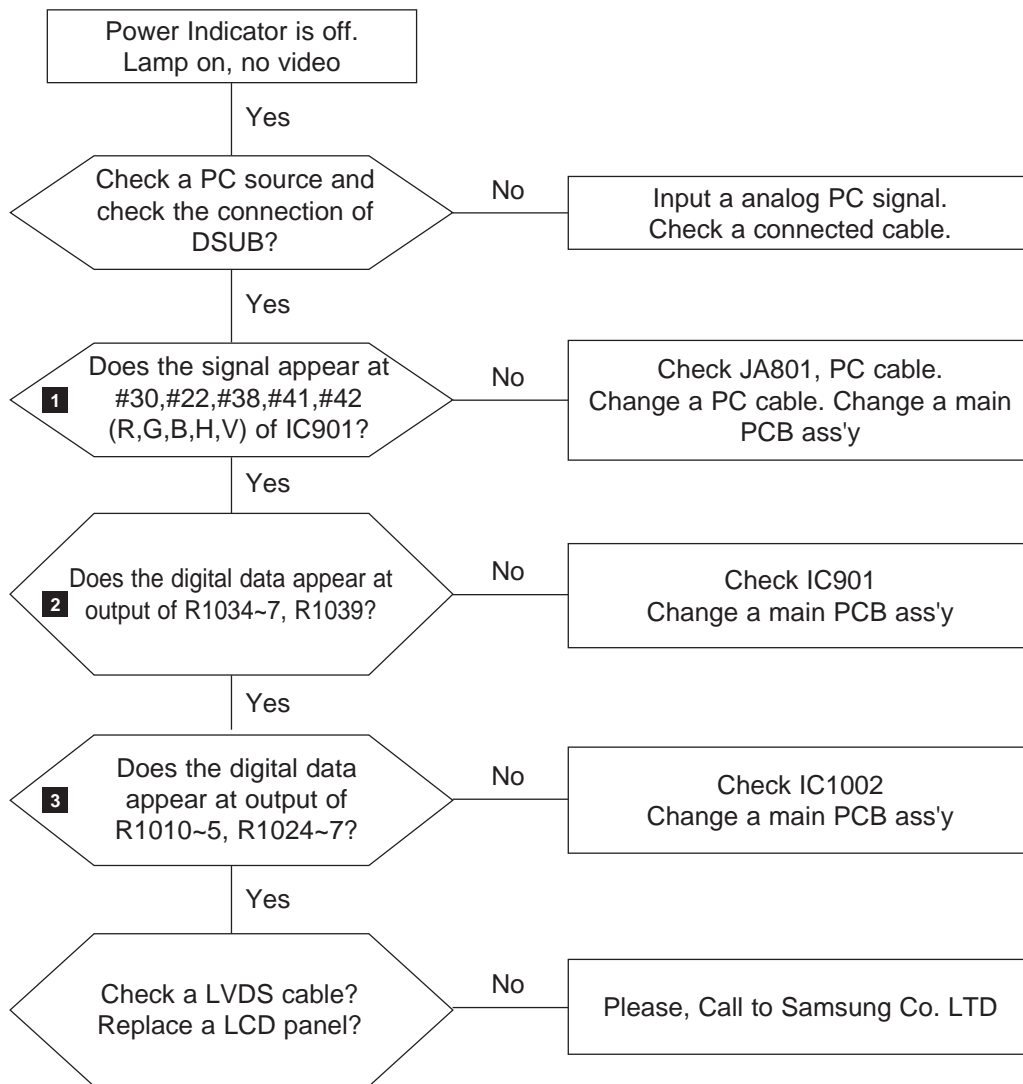


## 4 Troubleshooting

### 4-1 No Power

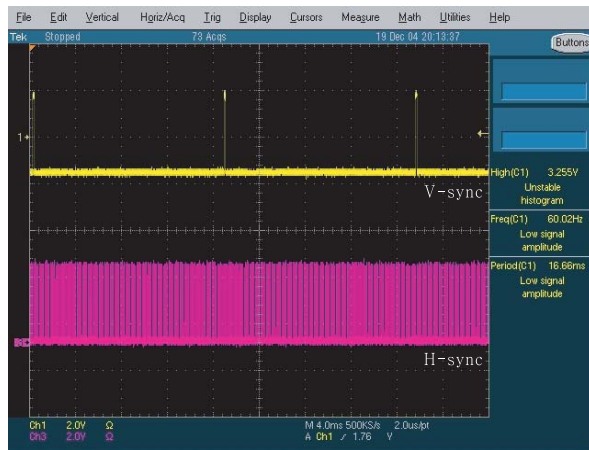


### 4-2 No Video (Analog PC Signal)



## WAVEFORMS

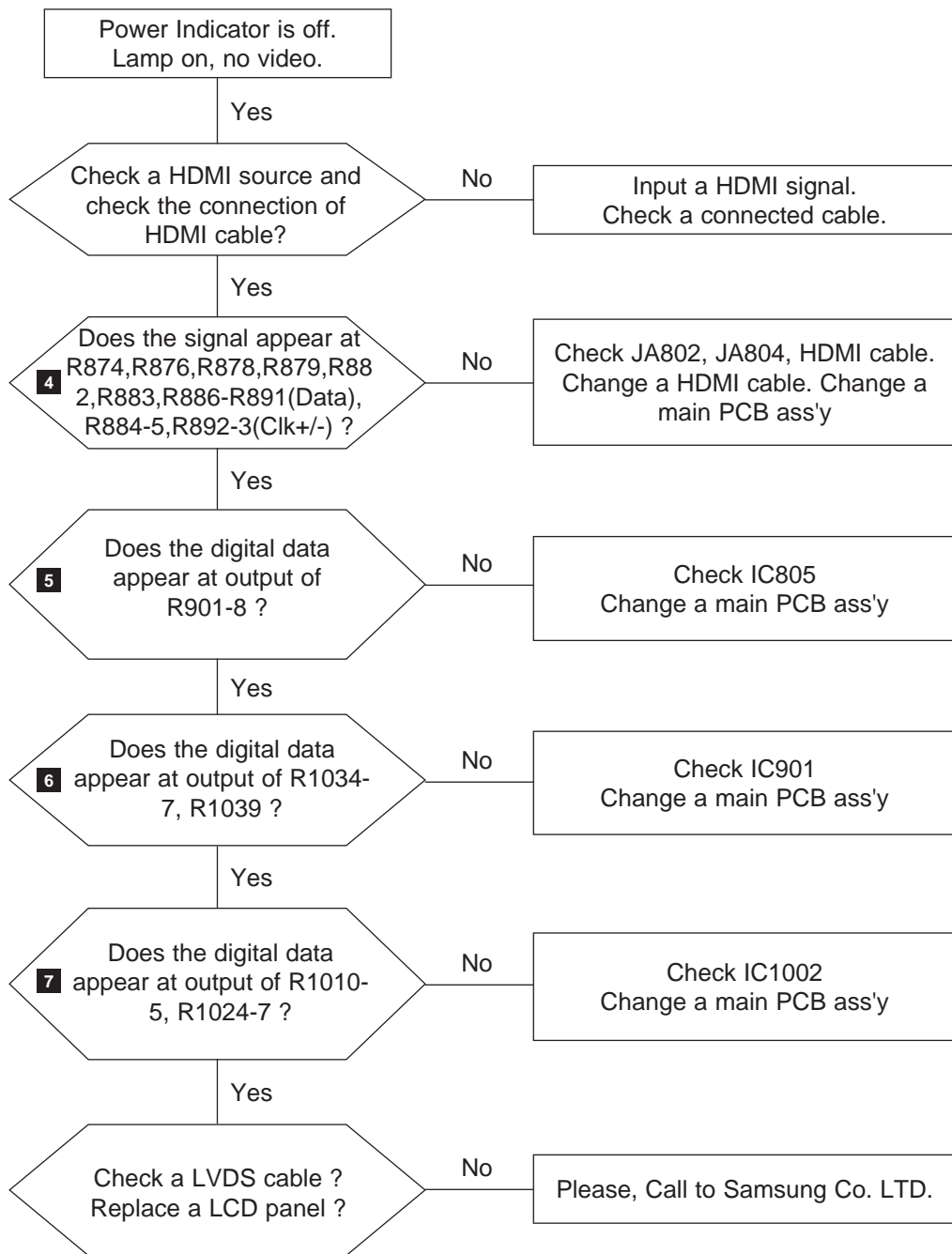
### 1 2 PC Input (V-Sync, H-Sync)



### 3 LVDS Out (CLK+ /-)

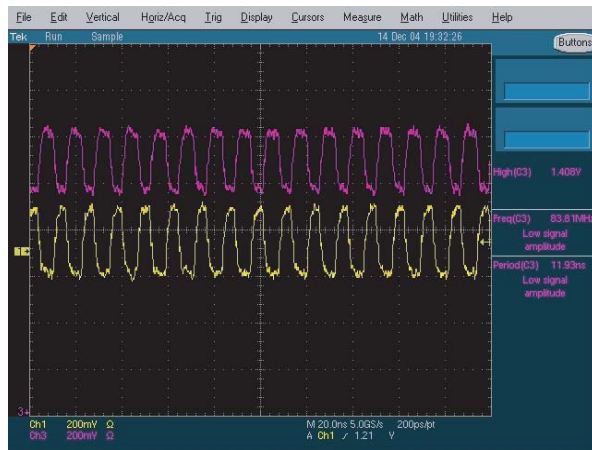


### 4-3 No Video (HDMI - Digital Signal)

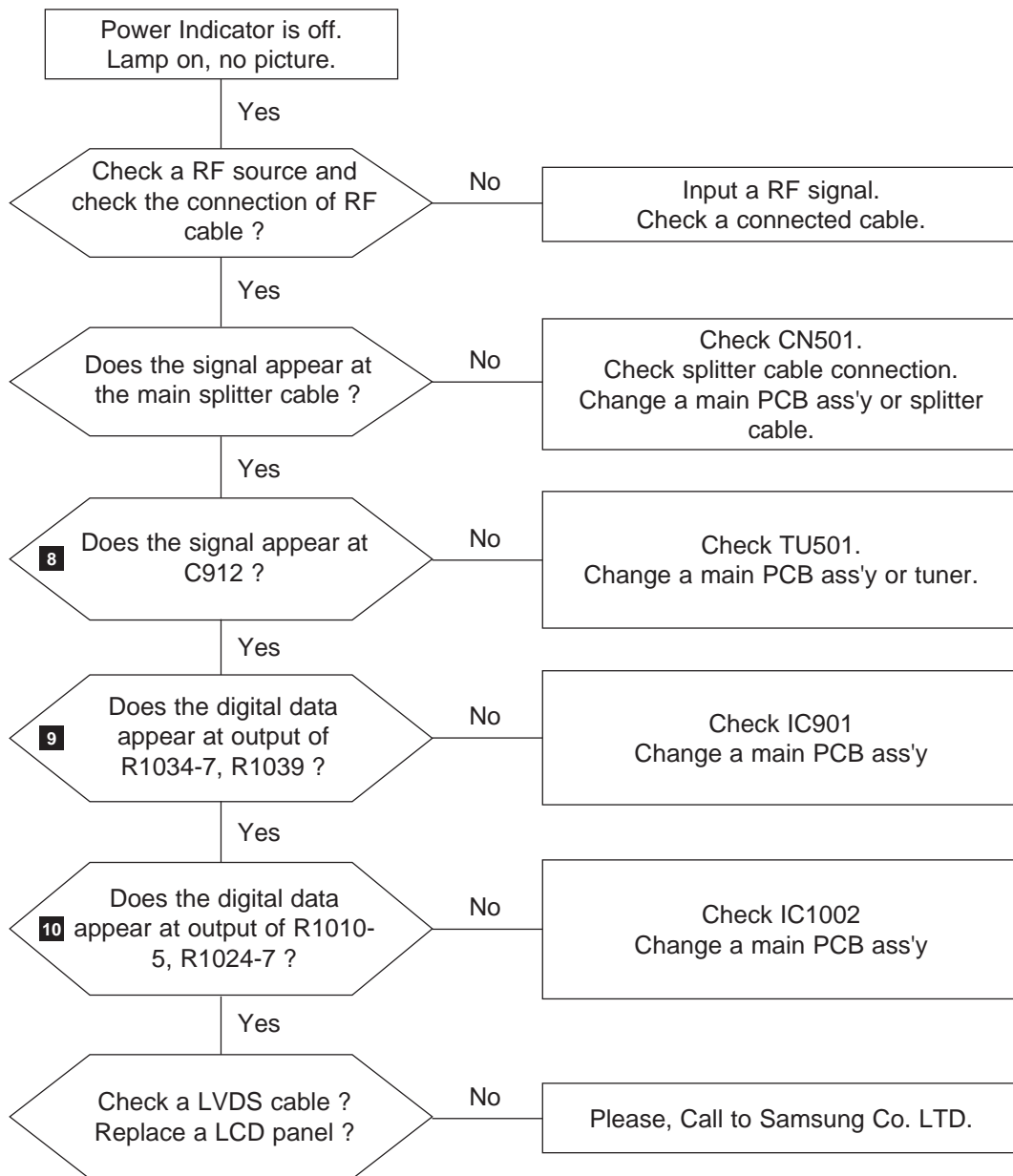


## WAVEFORMS

## 4 5 HDMI Input (CLK +/-)

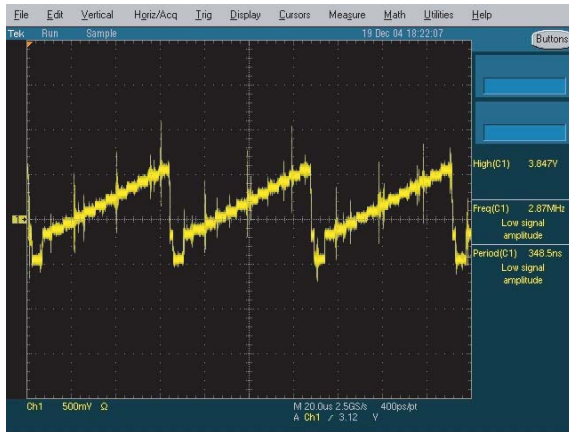


### 4-4 No Picture (Tuner\_CVBS)

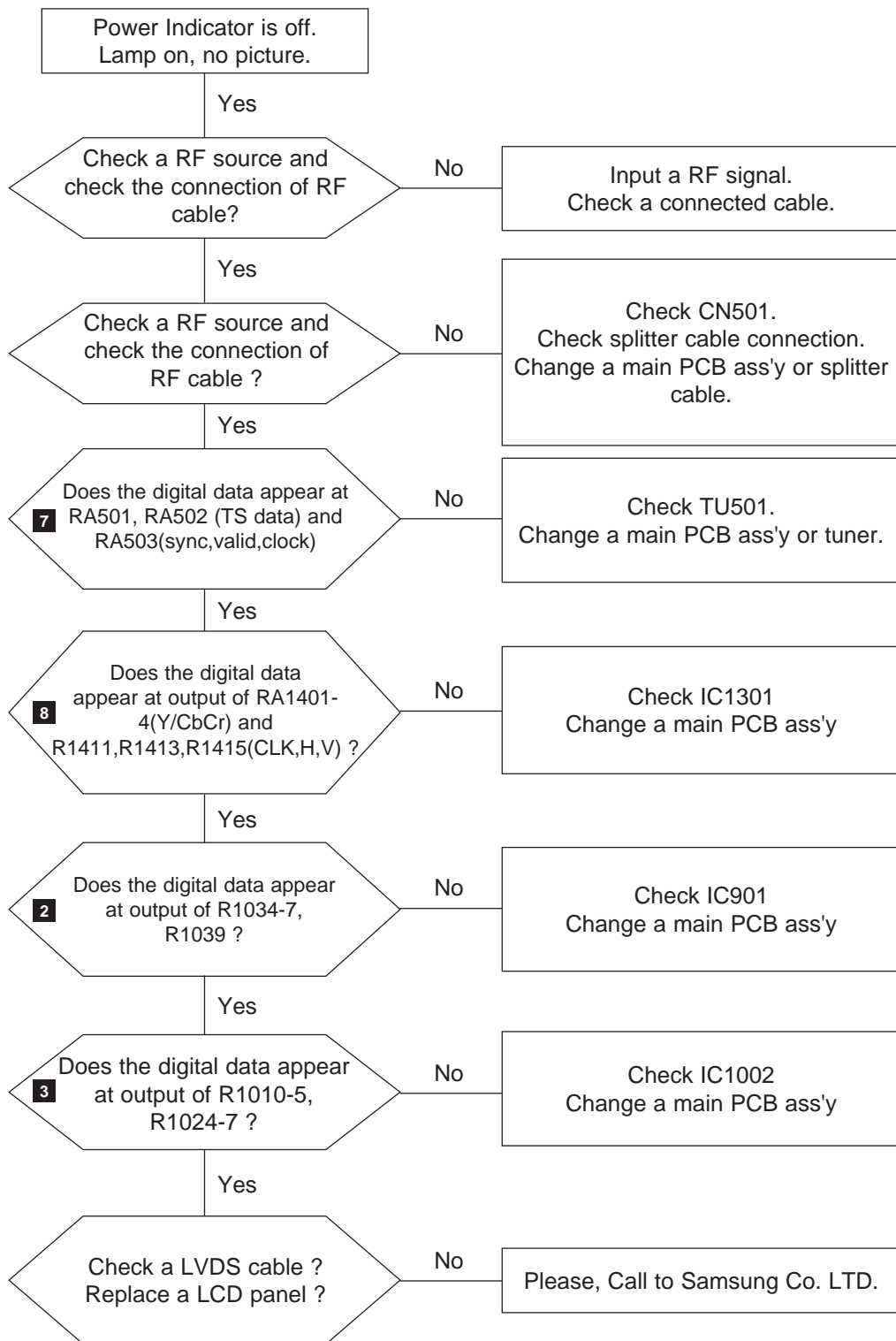


## WAVEFORMS

## 6 Tuner CVBS Out (Pattern: Grey Bar)



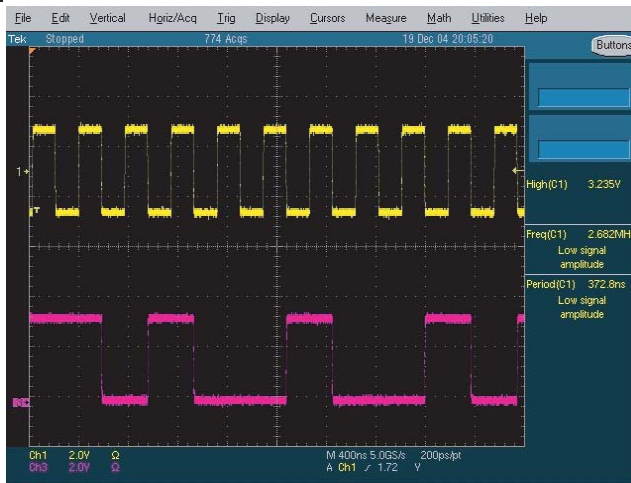
### 4-5 No Picture (Tuner DTV TS)



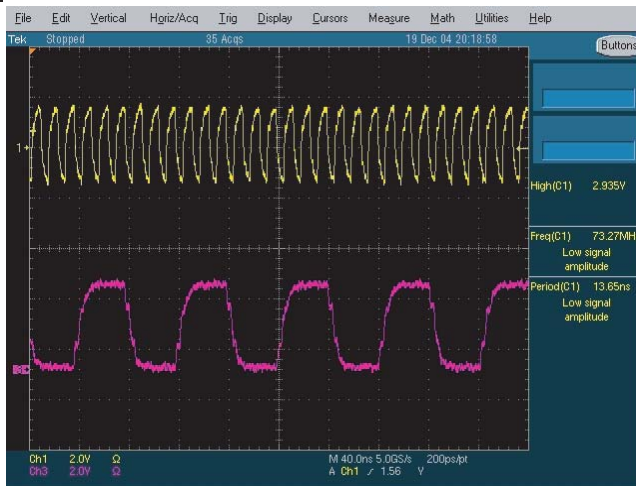


## WAVEFORMS

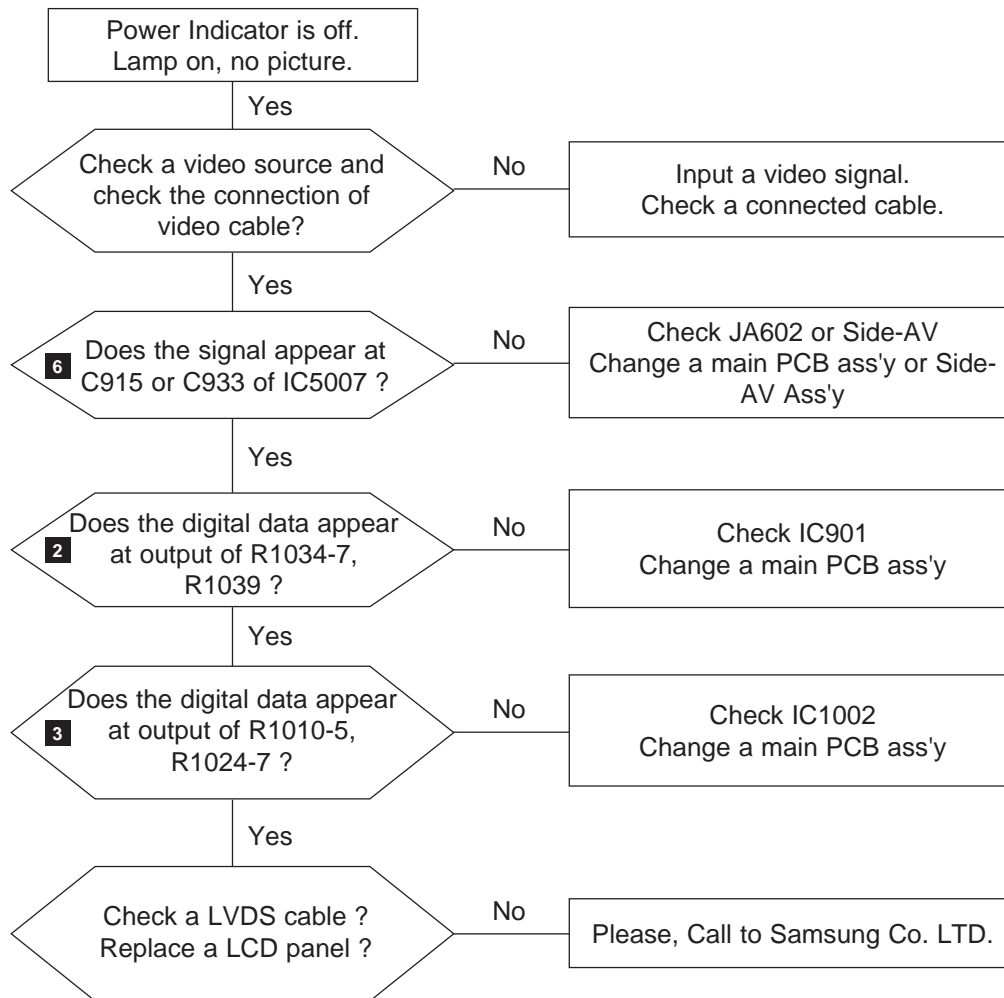
### 7 TS DATA Out (Clk, Data[0])



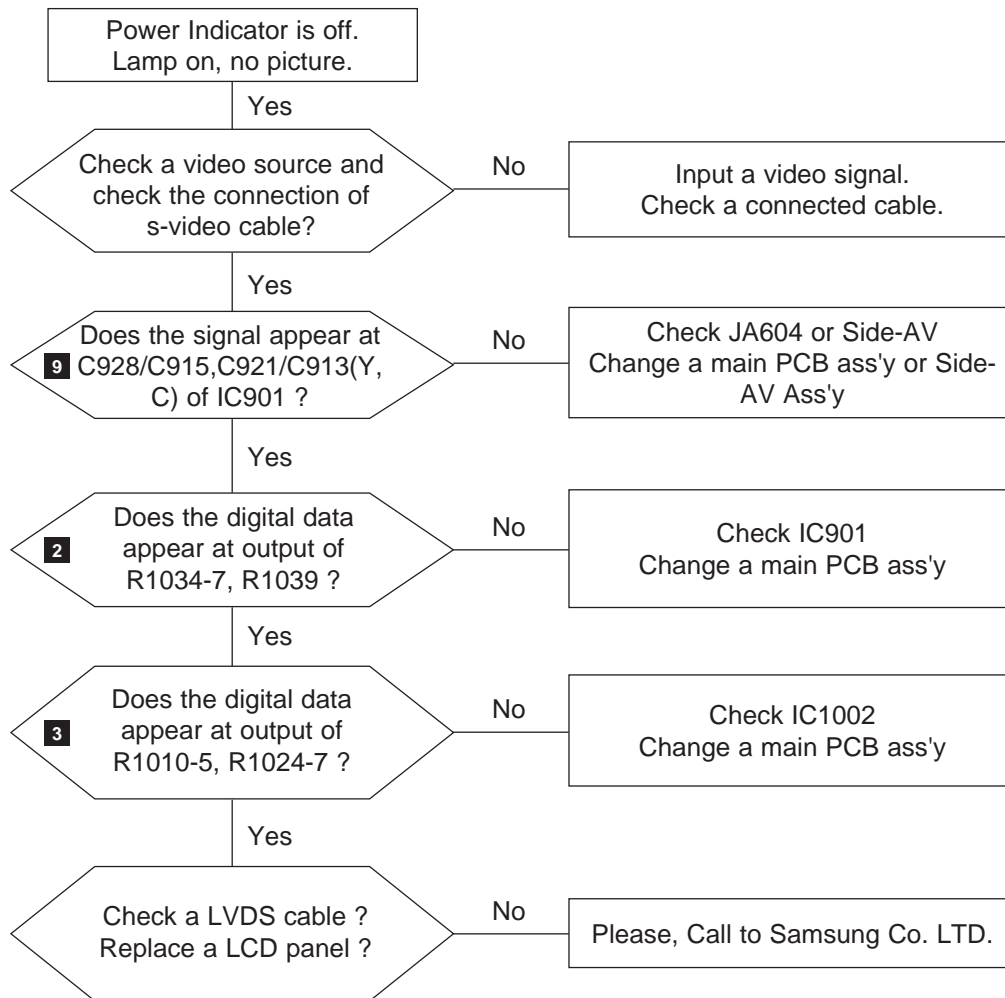
### 8 Eagle+ Out (Clk, H-Sync)



### 4-6 No Picture(Video CVBS)



## 4-7 No Picture(S-Video Y/C)

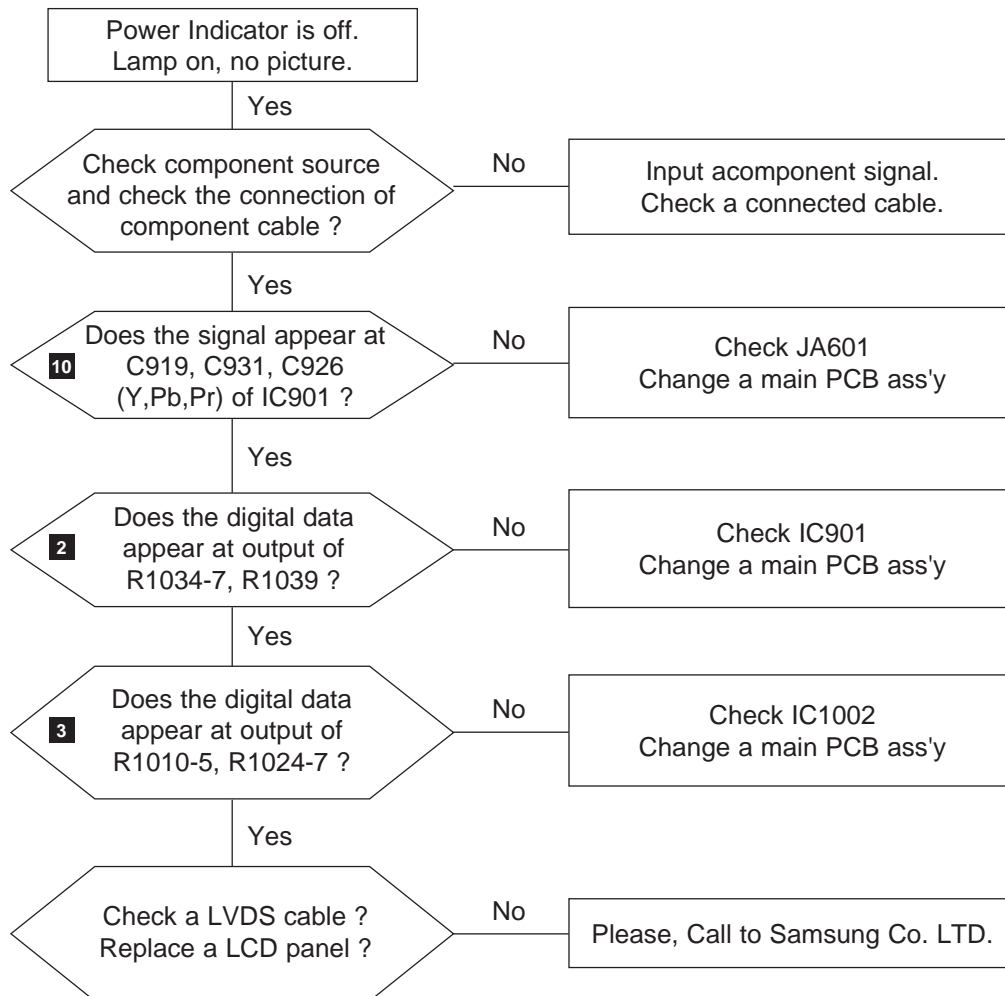


## WAVEFORMS

### 9 S-VIDEO Input (Y/C)



## 4-8 No Picture(Component1, 2 : 480i, 480p, 720p, 1080i[ Y, Pb, Pr] )

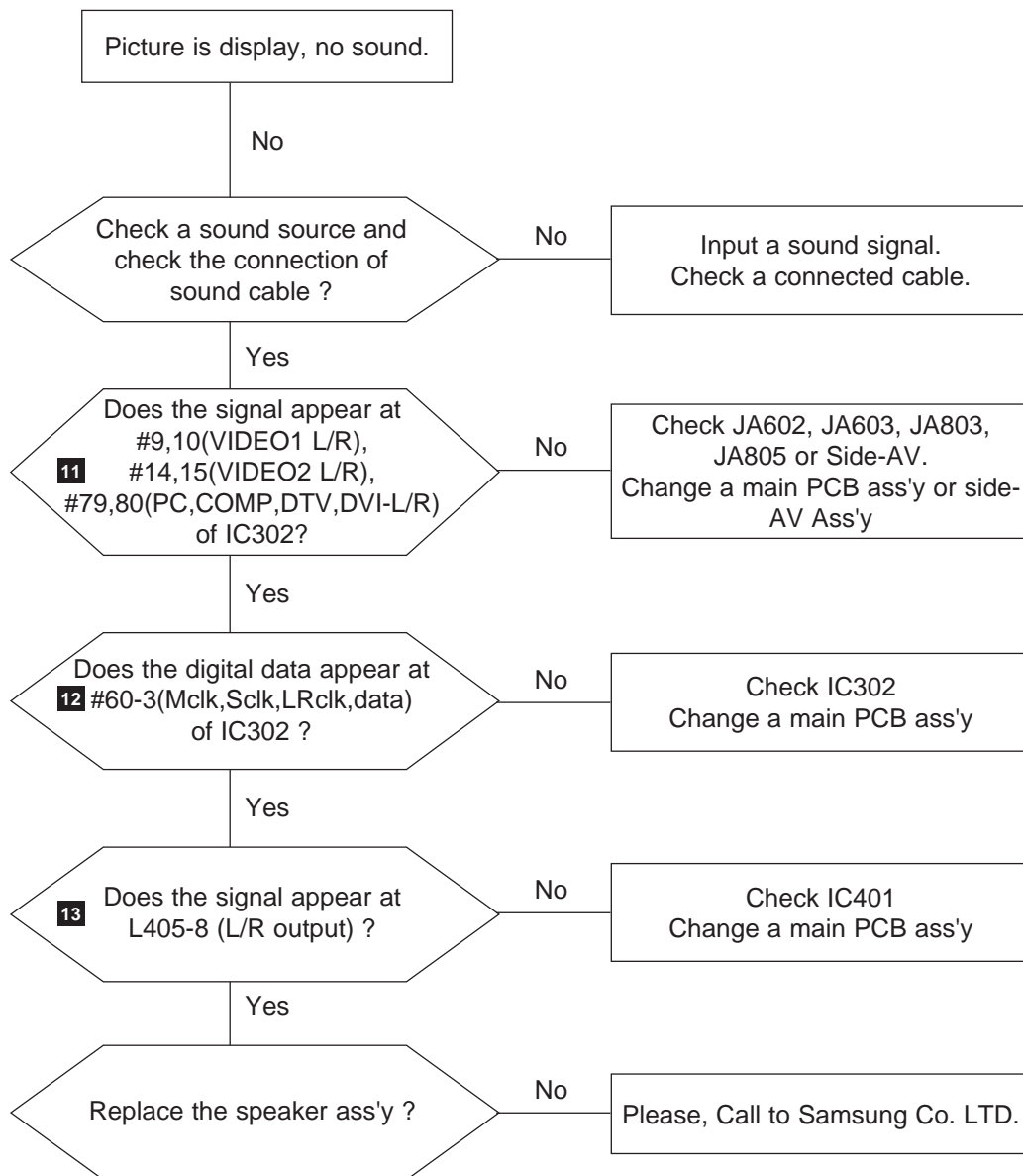


# WAVEFORMS

10 Component Input (Y/Pb)

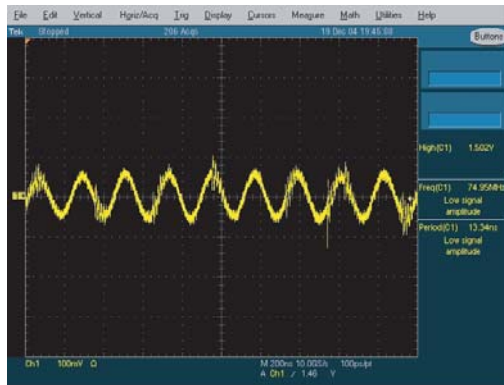


## 4-9 No Sound

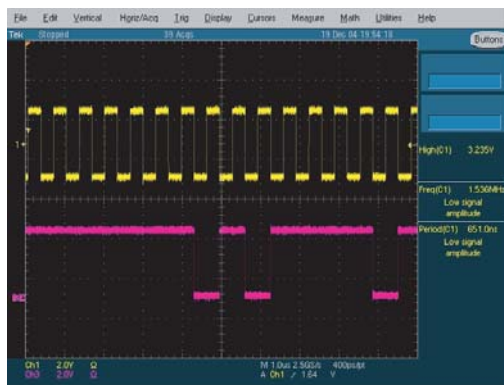


## WAVEFORMS

**11** Audio Input (Sign Wave)



**12** I2S Input (Clk, Data)



**13** Audio Amp Out (Sign Wave)

